

Accessible summary



a HOSPITAL is not a HOME

Time to move on...

Why is it taking so long to move people with a learning disability out of long-stay hospitals?



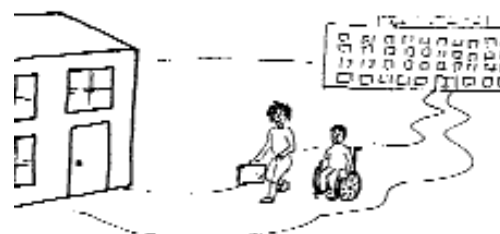


Closing long-stay hospitals

In 2001, the government published plans for people with a learning disability in the Valuing People White Paper.



The government said that all the long-stay hospitals should close by April 2004.



It also said that all people should live in housing in the community and not in hospitals.

Turning Point agrees that the remaining long-stay hospitals should close. People should not have to live in hospitals. A hospital is not a home.

There are still 752 people living in long-stay hospitals.

Some people have lived in a hospital for most of their lives. Some people with a learning disability living in long-stay hospitals have high support needs. This means that they may have additional disabilities or mental health problems or challenging behaviour.



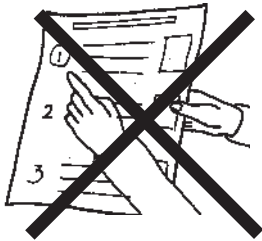
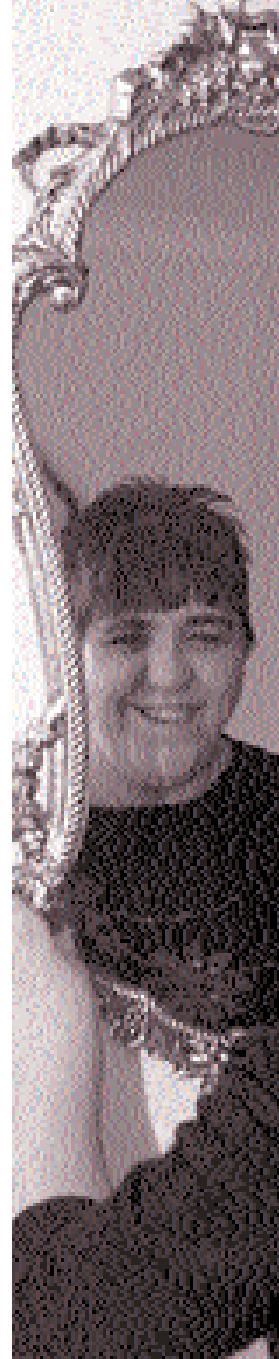
It is very difficult for the people who are still living in long-stay hospitals. Many people have seen their friends leave the hospital. They do understand why they have been left behind in the hospitals. Many people are angry and confused. They do not think that people are listening to them



The government knows that not all the hospitals will close by April 2004. They think that 16 hospitals will still be open after April 2004. Some of these will not close until 2006.



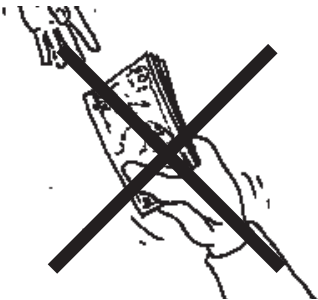
Turning Point thinks that there are four reasons why hospitals will not close by April 2004.



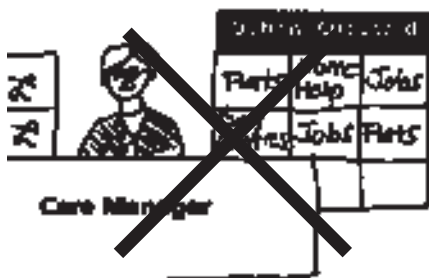
1. The government has not made it top priority. This means that NHS and Social Services know they should be closing the hospitals but they have been told to do other things first.



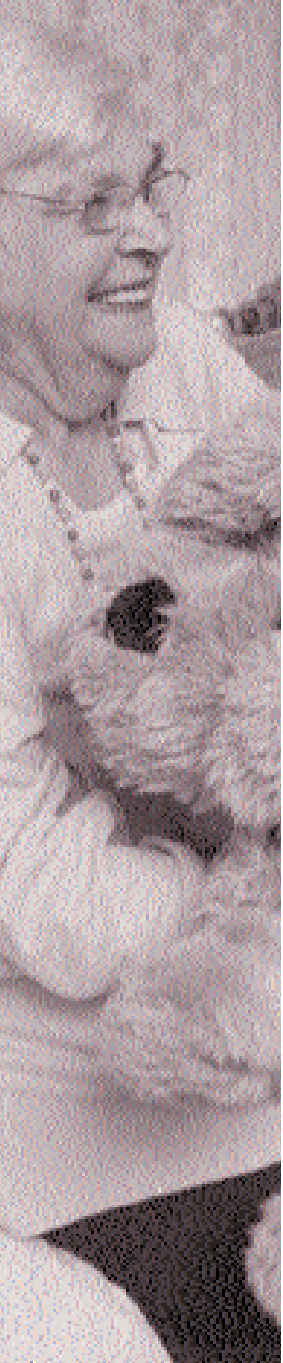
2. It is sometimes hard for people in the NHS and Social Services to work together. This has made it hard for plans to be made and to decide how money is spent.



3. There is no extra money to help move people into the community. This means that the NHS and Social Services do not have enough money to move people out into the community.



4. There are not enough services for people with a learning disability locally. This means that in some places people with a learning disability are having to wait longer to move out.

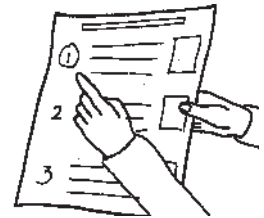


We do not think that the government is doing enough to close the hospitals. We want the government to do more so that people can leave hospitals and be supported in housing in the community.



Living in the community will mean that people have more choice and control over their lives. They will be able to decide who they live with and what they do in the day.

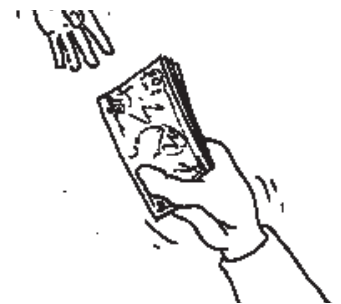
We think the government should do this by telling the NHS and Social Services that it is the most important task.



They should also make sure that the NHS and Social Services work together to make it happen.



We also think that the government should provide an additional sum of money, £15 million, to help move people out of long-stay hospitals.



This report was produced by Turning Point:

New Loom House
101 Backchurch Lane
London E1 1EU

tel 020 7702 2300
info@turning-point.co.uk
www.turning-point.co.uk

