

# Building futures

**TURNING  
POINT  
BUILDING  
FUTURES**  
turning lives around



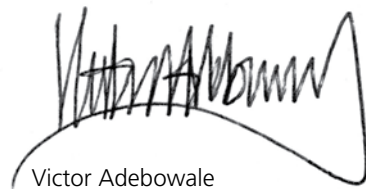
A modern vision for quality  
high support services

Building Futures is the modern vision of quality high support services in the UK. Intensive community rehabilitation delivered in state-of-the-art, purpose-built accommodation. It enables individuals with complex needs to take a seamless step forward towards independent living.

Building Futures offers a joined-up service within the community, reducing the need for out-of-area placements. It delivers long-term savings for commissioners by greatly increasing each individual's potential to move on to successful independent living and thereby reducing costs for commissioners.

Building Futures gives commissioners the opportunity to innovate, be ready for the future and offer outstanding new community-based high support services that deliver measurable results and outcomes.

With Building Futures you can support local people, bring them home and help them build a bright future.



Victor Adebowale



**Contents**

- 3** Building your vision
- 5** Building homes
- 7** Building communities
- 9** Building lives



## Building Futures

Building Futures is a groundbreaking programme unique to Turning Point. It helps commissioners design and create their own vision of world-class, high support services of the future – today.

Building Futures is a complete package. It combines funding and construction of advanced, community step-down accommodation with the provision of quality person-centred support for people with complex needs.

Building Futures creates services that move people safely out of the secure system into purpose-built services that manage risk on behalf of NHS Trusts.

Building Futures gives individuals the opportunity to rejoin their own communities and take a step closer towards living successful independent lives.

## Across every sector

The Building Futures model can be applied to any sector, enabling individuals with a range of complex needs and behaviours to be accommodated within a single high support service.

Even though our individually designed, state-of-the-art accommodation is not designed to operate as a low secure unit, it is built to PICU low secure standards. Our high staffing service model is tried and tested, delivering the right level of support for successful community reintegration.

Building Futures helps people with dual diagnosis, substance misuse issues, mental health needs, learning disabilities and offenders to get the treatment and support they need.

## Designing high support services

Our community rehabilitation model has a recovery approach at its core. Our services are designed to adapt to meet the needs of clients who are detained under the Mental Health Act, offenders with complex needs or people with dual diagnosis who require intensive support to manage risk.

No matter the severity or complexity of an individual's needs, we aim to move them to a position where they can become informal patients ready to leave the service and move into a community setting. We have a 2:1 staffing model providing robust relational and physical security and intensive rehabilitation.

## In partnership with you

Building Futures works in partnership with commissioners and communities. It is a unique collaboration.

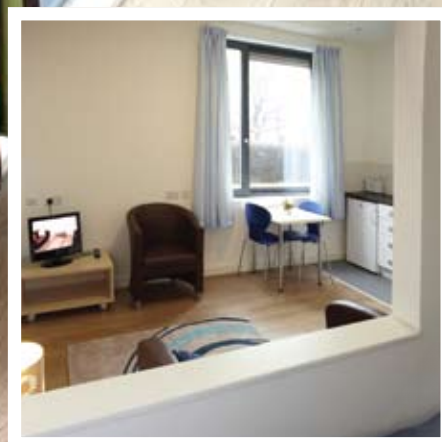
From the outset, we analyse the cost benefits of repatriating local people out of low or medium secure services. We work with commissioners to identify gaps in local support provision, using our experience to help them tackle the barriers of bringing people home.

We work with, consult and draw on the experience of local NHS Trusts, GPs, criminal justice services, specialists and voluntary sector organisations to create streamlined services that integrate into this existing provision.

Building Futures creates high support step-down services that are bespoke to each local community.



# Building homes



## A modern vision

Creating the right buildings in which to operate high support services is as important as the service itself. Our BREEAM compliant buildings are designed to synchronise with the user's unique needs and changing levels of risk, creating a modern, highly effective service that is future proof.

Our buildings are state of the art. They are designed to reduce energy consumption and environmental impacts at every level. Internally, each self-contained bed-sit flexes to suit the individual. Every room can be stepped up or down to reflect the changing daily needs of each individual and their progress towards independence. Every service is designed from the outset to meet the needs of individuals with complex needs and their communities.

Our high support core approach, combined with the specification of the accommodation allows for different levels of support for different individuals within the same building – providing the ultimate flexibility that can deliver long-term cost savings.

## For the individual

Turning Point has a history of designing person-centred community-based services for people with complex needs stretching back more than 45 years. Building Futures uses this vast experience to create unique buildings to house high support services that focus on rehabilitating individuals and getting them back into the community.

Involvement is a key element of Building Futures. Through involving individuals in the design and daily delivery of their care, our high support services go further to provide truly person-centred support tailored to the precise needs of each individual – support that delivers real results.

## Supporting people

Building Futures constructs modern, technologically advanced, people-focused services – not institutions. They do not feel like hospitals – they are real modern homes. Domestic and comfortable. Each building is carefully designed to create a relaxing, safe, secure environment that empowers individuals to reach their potential and take control of their lives.

Internally, the building is designed to minimise self-harm or suicide risk, maximise easy observation and at the same time ensure service users have the privacy they deserve. Our buildings work with the service, not against it, to allow individuals to take managed risks in order to learn how to live successful, independent lives.

## Delivering results

For commissioners, supporting individuals in a Building Futures service costs the same amount as low secure. Our aim is that significant savings will be seen within two years as people move into supported tenancies. This is because of the highly intensive, person-centred nature of the support people receive – support that is totally focused on helping them move back into the community.

People with complex needs benefit from quality high support delivered within a unique, purpose-built therapeutic environment. With Building Futures, people are motivated and empowered to take managed risks in order to learn the skills they need to move on. Their social inclusion is increased through living and interacting with their own community. Social functioning is improved and individuals who are detained have the opportunity to become informal patients within the mental health system.



Images of The Corner House, a Building Futures project.

## Bringing people home

Building Futures helps commissioners repatriate people currently in out-of-area placements back to world-class, modern high support services in their local area. Building Futures brings local people out of low or medium secure services and a step closer to home.

Where repatriation is not possible due to the risk involved in a return to the home area, we offer alternative placements in our high support services across the UK. Our geographical spread enables NHS Trusts to consider moving people on to services that give all individuals, no matter their needs or behaviours, the chance to start building an independent life.

## Integrating local services

Building Futures creates services that reflect and enhance existing care pathways. Our services operate in clinical partnership with NHS Trusts and local public sector clinicians including consultants, psychiatrists, psychologists and GPs.

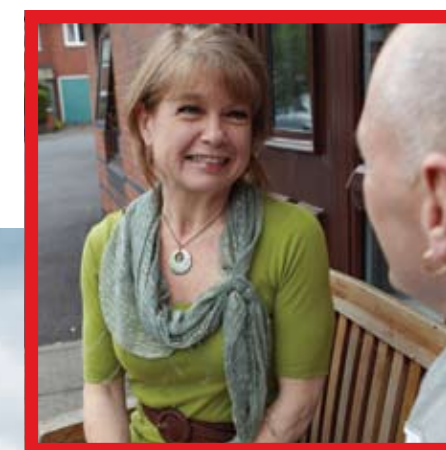
We work directly to, and with, the local commissioners to deliver a joint service level agreement. By placing individuals, from the outset, under the care of local clinicians, they experience a continuity of care that offers the stability necessary for them to make a success of their journey towards independence.

## Creating jobs

Building Futures creates local jobs. Each one of our services creates up to 50 new jobs, from gardeners, chefs and housekeepers to key workers and clinical staff. Our service in Derbyshire alone will create more than 90 new posts. The building firms we use must be members of the Considerate Contractors Scheme, committed not only to reducing the environmental impact of their work but also to using local craftsmen and supplies sourced from the area.

## Regenerating communities

We build services for people who want to live proactive lives in their local community. Individuals and staff use the local shops, businesses and leisure facilities. They contribute to the economy and add to its vibrance. Our services purchase daily supplies from the local area, keeping money circulating in the community that in turn helps businesses to grow.



## The Corner House – case study

The Corner House is a Building Futures step-down facility for men leaving secure services in South Yorkshire. It has capacity for 12 men with a primary diagnosis of a learning disability and associated complex needs, both mental and physical.

## Using the latest high support technology

The Corner House can operate as both locked and unlocked facilities at the same time, using a bespoke key fob system that can give or restrict access depending on the needs of each individual.

All the technology and services such as water and electricity to each bed-sit can be individually controlled, allowing different service users to have access to different facilities within the same accommodation, dependent on the level of risk and need.

This environment allows individuals to learn how to manage an independent life, take therapeutic risks and develop at their own pace within a safe setting, increasing the chances of a successful long-term transition back into the community.

## Delivering outstanding support

The Corner House has a team of 39 staff made up of nurses and support staff and also including an occupational therapist and social worker, user involvement worker, activity co-ordinator and discharge planning co-ordinator who support both community and house-based activities. All staff use a person-centred approach. The service has a psychologist, psychiatrist and doctor, who support the ongoing clinical care of the residents.

Each resident has a dedicated team of staff who provide continuity of care, guiding individuals through their transition from secure care throughout their stay at The Corner House through to their discharge into community living.

Service users are involved not only in their own care plan but also in every aspect of the running of The Corner House. Through daily and monthly meetings individuals make decisions on the care and support they receive, the food they eat and the activities they take part in. The Corner House is an innovative service that has been designed to support residents in all aspects of their development.

## At the heart of the community

The Corner House is part of the local community. Individuals are encouraged to engage, wherever possible and practical, in the life of the local area. We design care plans that flex with each individual, offering exciting opportunities to become active members of the local community. The main focus of the service is on preparing each resident for living in the community independently or with support, after their stay at The Corner House.

Whether someone wants to undertake voluntary work or attend the local gym, whether they need to build up their confidence in using the local post office to learn how to manage their own money, at The Corner House we ensure individuals have the opportunity to reach their potential within the community.

## Funding

To date, Building Futures has secured more than £15 million in capital loans and grants from a variety of sources and partner organisations to build advanced, high support facilities.

At Turning Point we believe that people with complex needs can be moved safely out of secure services. We know that individuals who have lived in secure services are able to lead successful, risk-managed, independent lives. Call us today and start transforming the lives of your local people in secure services.

**For more information  
contact us today  
on 08456 029 408.**

We turn lives around every day, by putting the individual at the heart of what we do.

Inspired by those we work with, together we help people build a better life.

Turning Point is the UK's leading social health care organisation. We provide services for people with complex needs, including those affected by drug and alcohol misuse, mental health problems and those with a learning disability.

**Turning Point**

Standon House  
21 Mansell Street  
London E1 8AA

Tel: 020 7481 7600  
Fax: 020 7481 7620

For more information please visit our website at [www.turning-point.co.uk](http://www.turning-point.co.uk)